

PERCEPTION

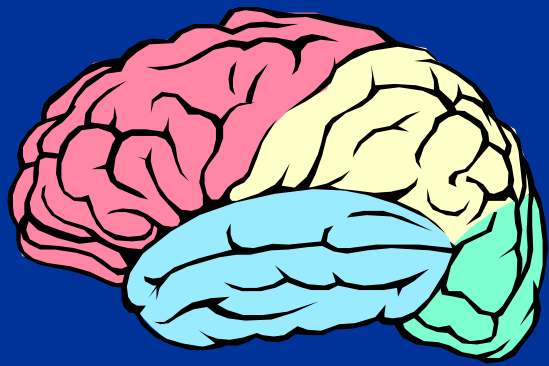
BY

Dr. Hisham Salah

MD Psychiatry

Lecturer of Psychiatry

Beni-Suef University



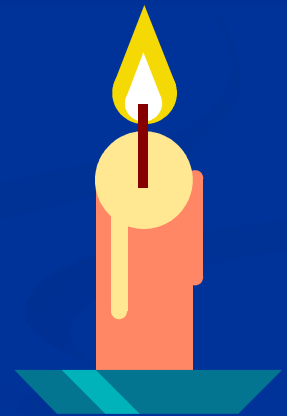
Cognition



Perception



Sensation



DEFINITION

- The process of giving a meaning to a sensation
- To know the environment by the use of senses
- Perception often takes place automatically

So, we receive signs and perceive meanings

Signs

- **Symbols:** Stimuli which stands for an object
- **Signals:** Stimuli received from an object



What do we perceive?

- Objects and relations between them
- Sounds, distance and time
- Internal world:
 - Ideas and concepts
 - Emotions
 - Motives
- Our body (image and functions)

Factors affecting perception

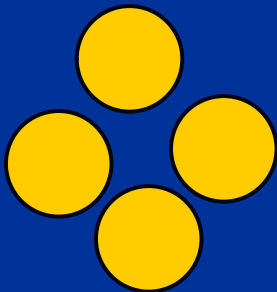
- Figural factors (External)
- Personal Factors (Internal)

Looking

Figural Factors

■ Similarity

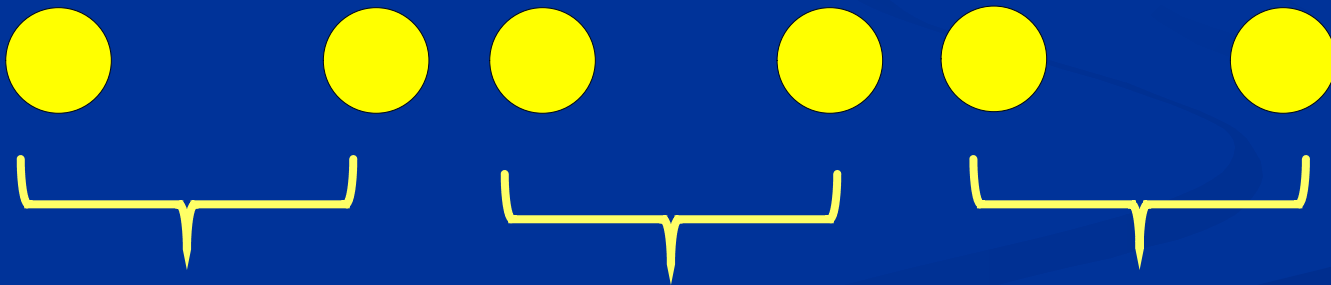
- Similar objects tend to be grouped together



X	O	X	O
X	O	X	O
X	O	X	O
X	O	X	O

■ Proximity:

- Proximate objects tend to be grouped together



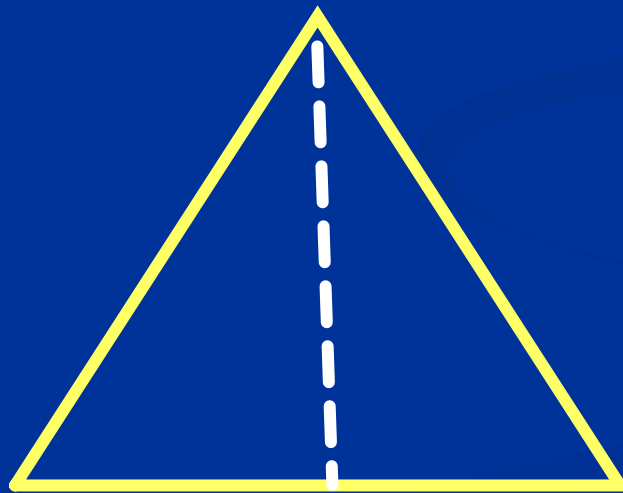
■ Closure:

- Stimuli tend to be grouped together in order to perceive a defective object as closed one



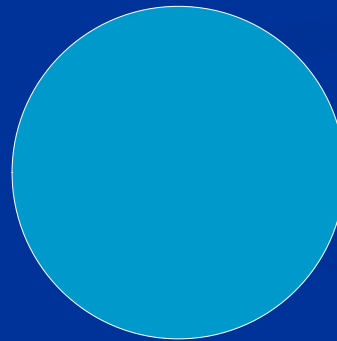
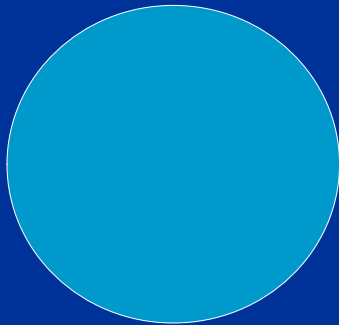
■ Symmetry:

- Asymmetric objects tend to be perceived as symmetrical ones



■ Approximation:

- Tendency to perceive poor figure as good and exact one



■ Continuation:

- We tend to continue lines to make rectangles instead of perceiving lines separately



Personal Factors

- Mood
- Needs
- Mental set
- Interest
- Habit and familiarity
 - AMATONY and ANATOMY
- Aesthetic factors

**Your Perception
of Me Is**

**A Perception of
You**

Disorders of perception

■ Illusion

- False perception of an external stimulus
- Due to:
 - Physical factors (mirror illusion)
 - Habit & familiarity
 - Set and expectation

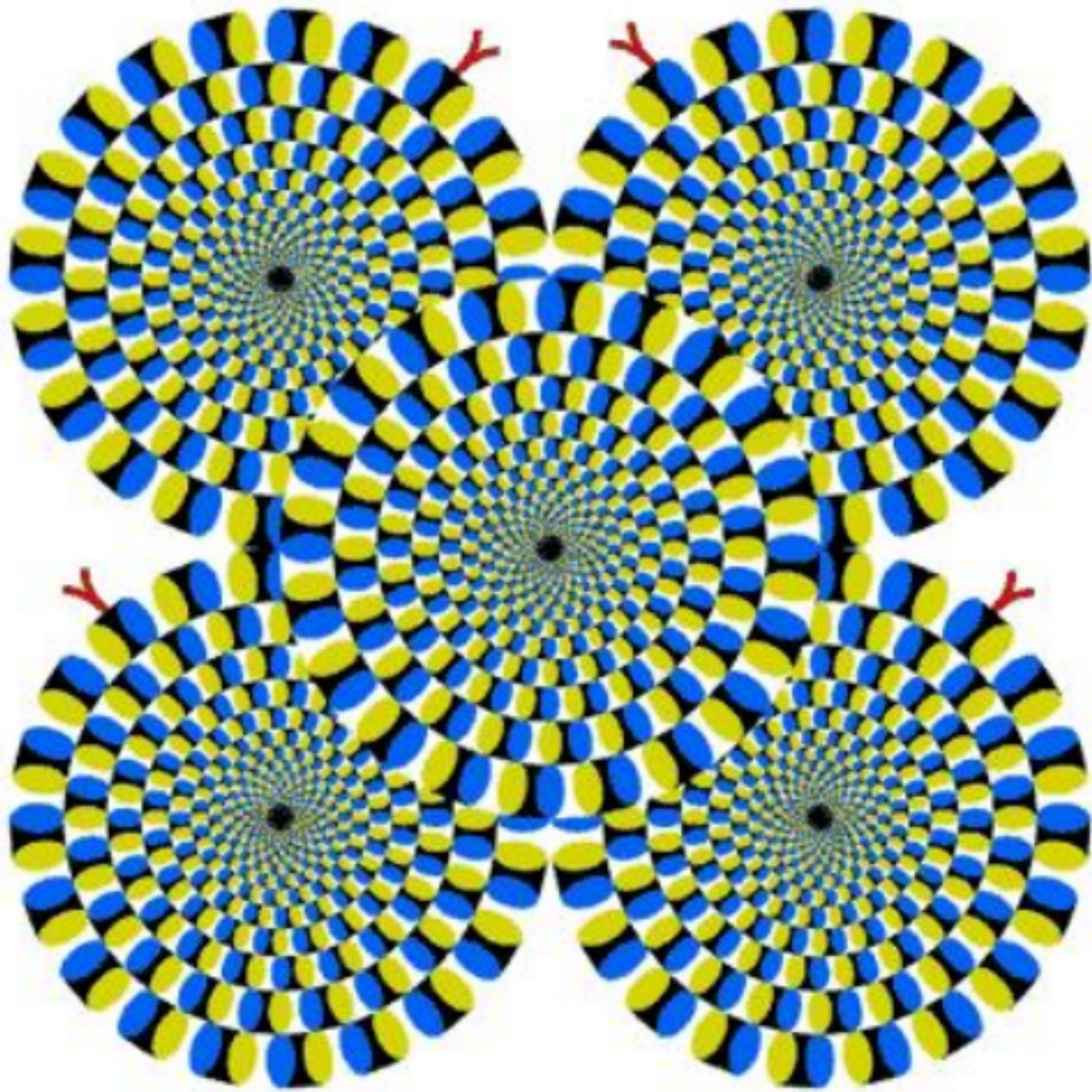
■ Déjà vu phenomenon

- Illusion of familiarity
- Occurs in normal conditions and TLE

■ Hallucinations

- Faulty perception without external stimuli
- Different modalities
- Non-pathological hallucinations:
 - Hypnagogic & hypnopompic hallucinations
 - Severe emotions
 - Stimulation of sensory organs
 - Sensory deprivation

- Pathological hallucinations:
 - Psychotic disorders
 - Organic brain syndrome
 - Temporal lobe epilepsy
 - Intoxication with hallucinogen substances (LSD)



THANK YOU